

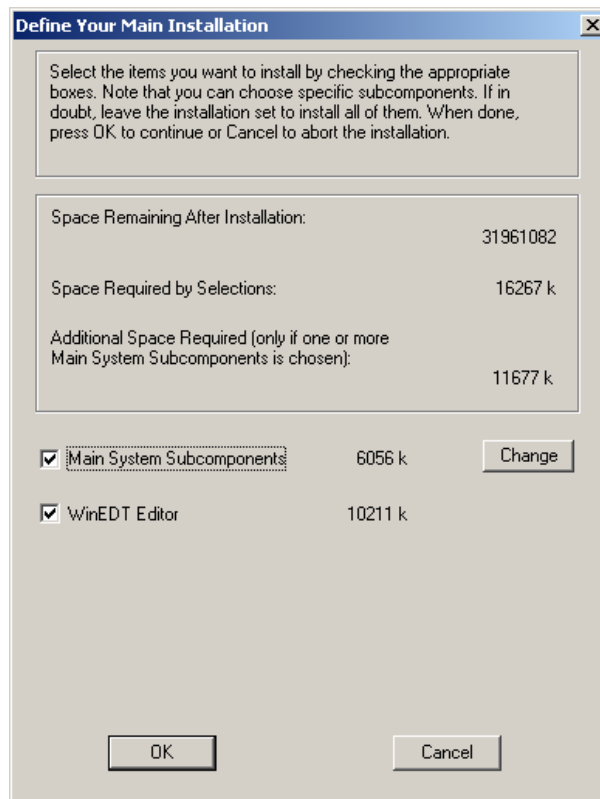
I have tried to install YandY TeX on a fresh Windows XP installation. The version I'm trying to install is Version=2.2.8.

Fonts were installed correctly.

For the TeX system

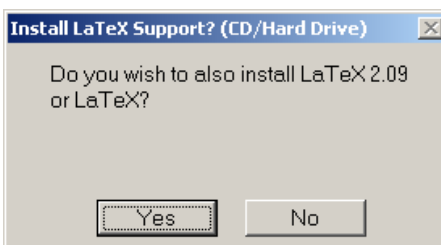
I chose Express install

I have not changed anything on "Define Your Main Installation" dialog (both items were checked)

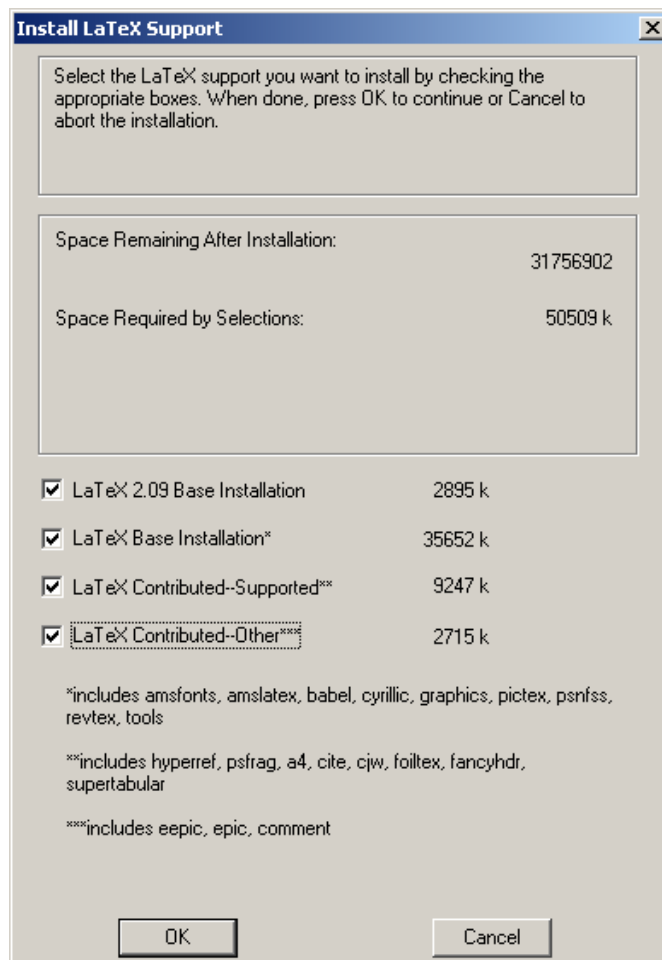


I watched the progress bar reach 100%.

After the installation of the TeX system I was asked whether I wish to install LaTeX 2.09 or LaTeX. I clicked "YES".

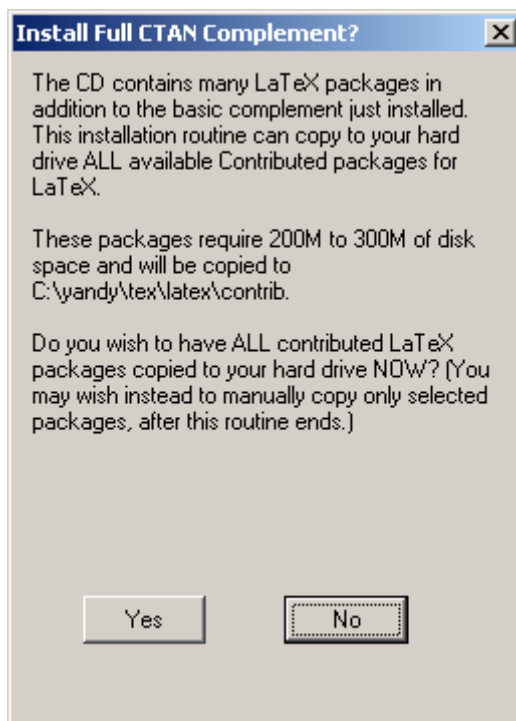


On the "Install LaTeX Support" dialog I made settings as below:

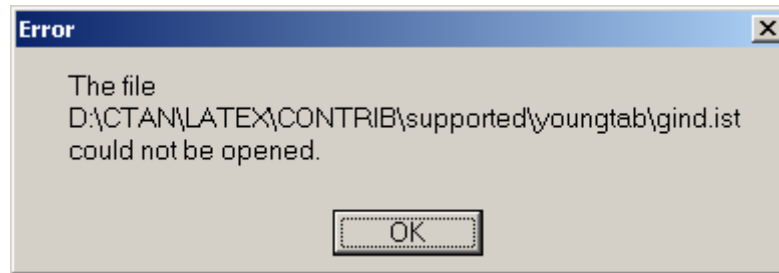


Clicked OK.

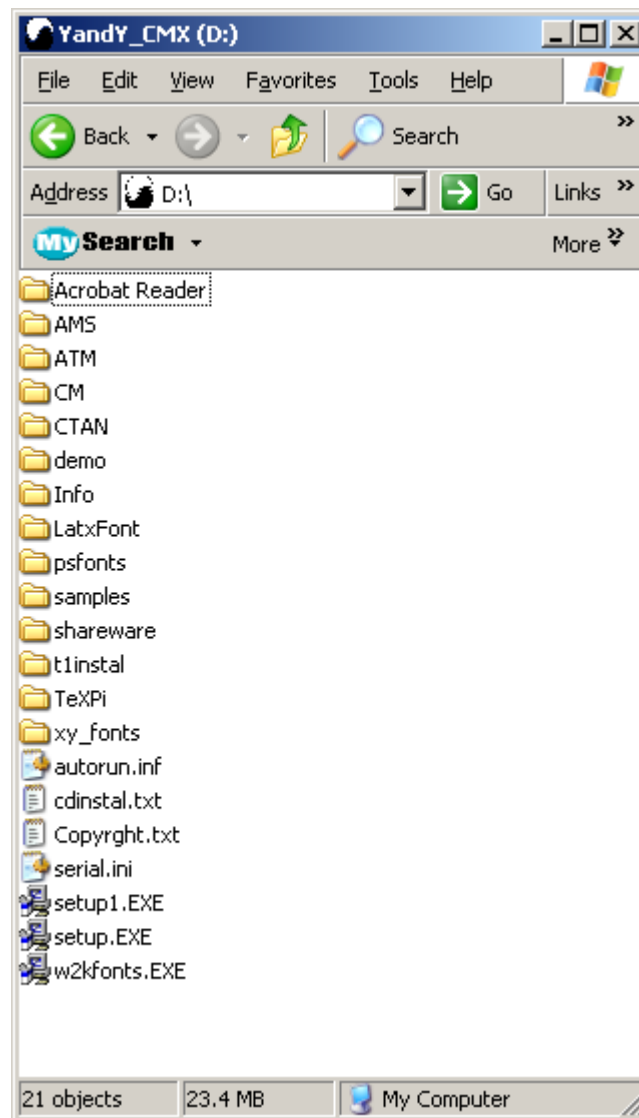
I watched the progress bar reach somewhere around 10%. Then the following dialog appeared.



I clicked YES and immediately received the error (below).



FYI: here is a screen shot of my CD contents:



And I don't see a folder named "latex" in CTAN folder, anymore. I guess it was there before but not anymore. That's why I assumed the CD was damaged or files were corrupted, etc.

This actually happened a little after I purchased YandY, so that's probably 2 years ago. But I was never able to get back to it. I have no idea why that happened. I'm so upset that I did not make a backup of the CD when I first received it.